

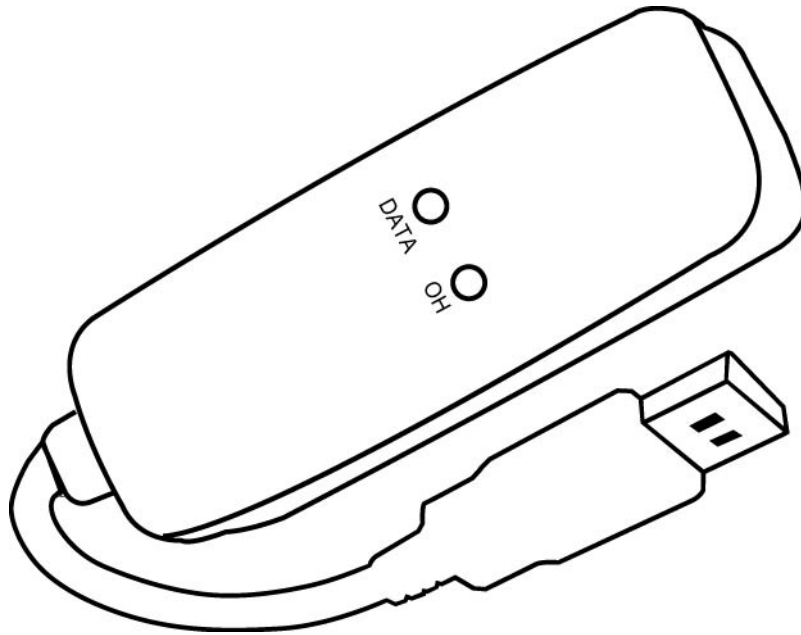
56K USB Modem

Quick Installation Guide

V1.0.1

Installation

1. Plug in your 56K USB Modem to your USB port.
 - 'OH' LED: On while dialing and connected; off after disconnected.
 - 'DATA' LED: Blinking during data sending/receiving.



2. Found New Hardware Wizard window pops up, click **Cancel**.



3. The installation driver CD in your package will automatically activate the auto-run installation program after you insert it into your CD-ROM drive. Then click **Driver Installation**.



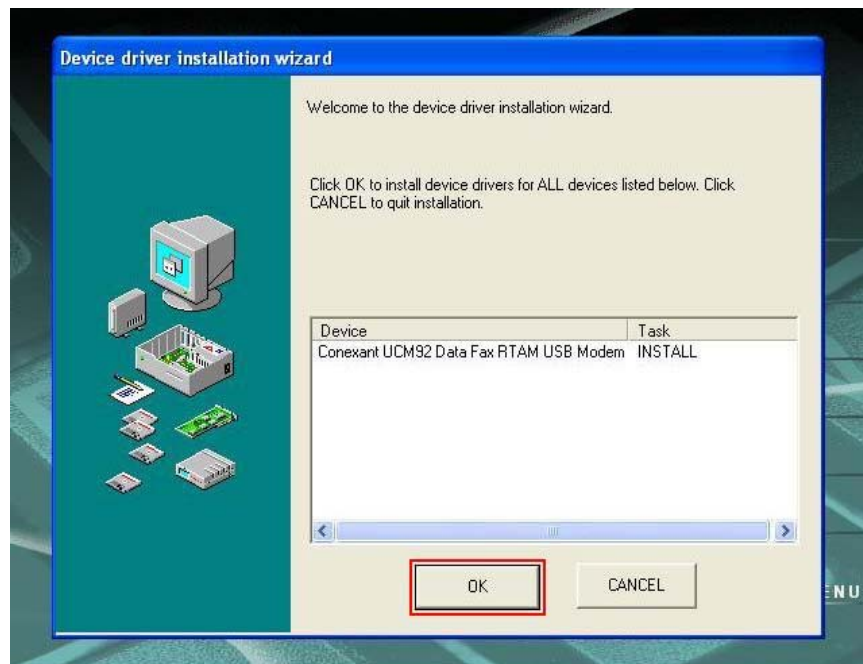
4. Select drive for your OS, for example: **Windows 2K_XP**.



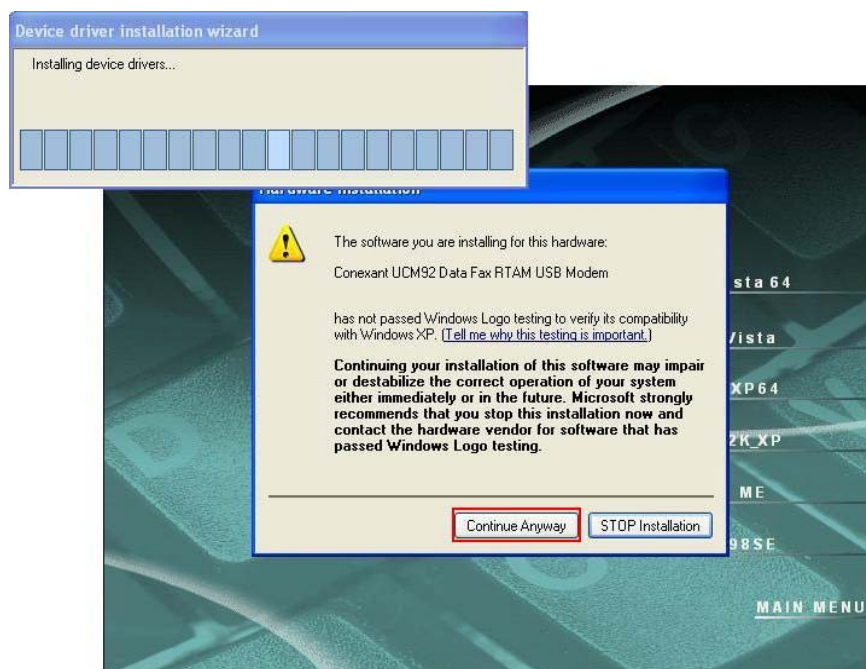
5. The **Device driver installation wizard** shows that the device is being installed.



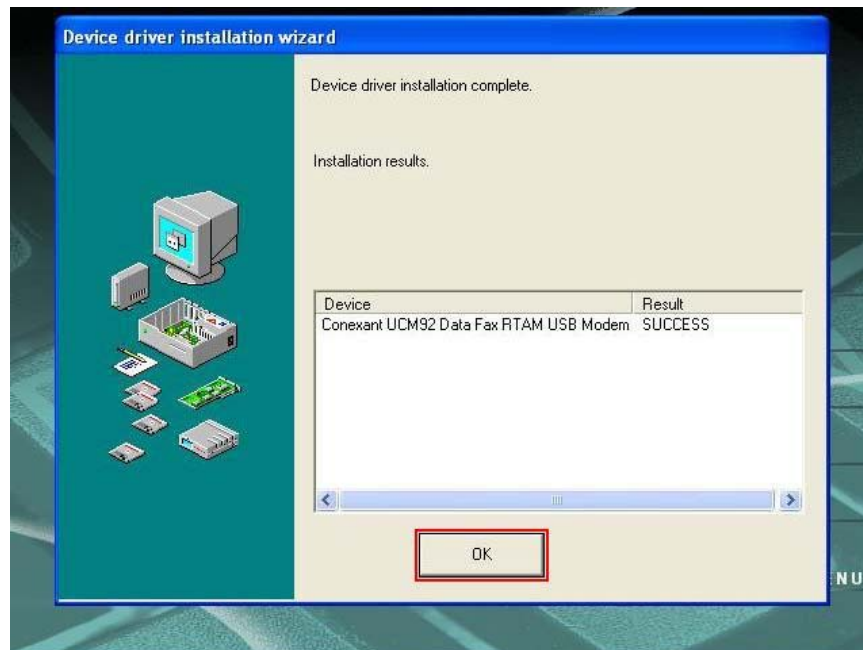
6. Click **OK**.



7. Click **Continue Anyway**.

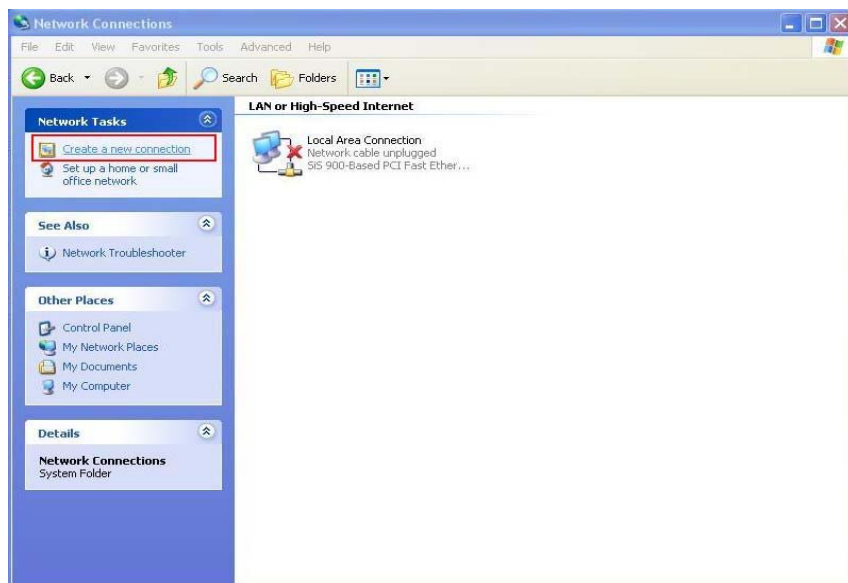


8. Click **OK**.

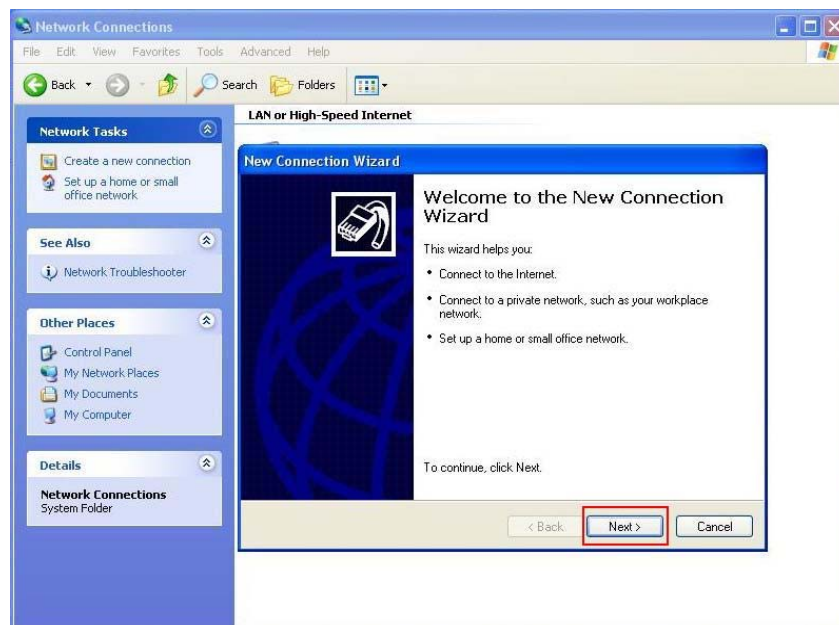


Manual Dial-up Connection Settings

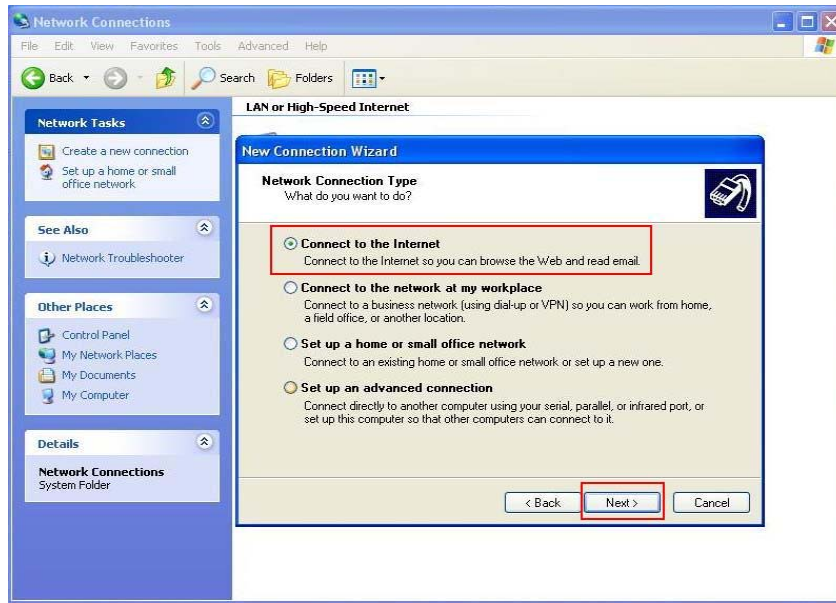
1. On **Control Panel/Network Connections**, click **Create a new connection**.



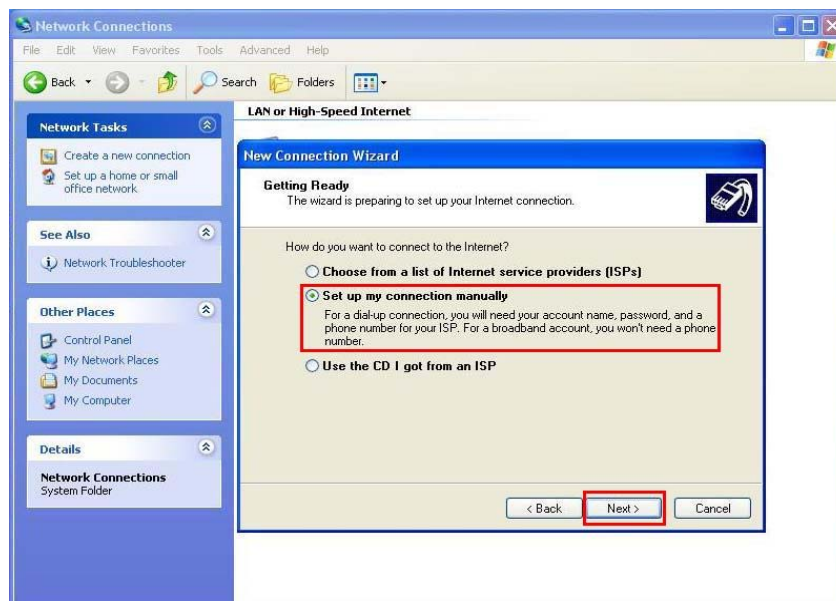
2. Click **Next**.



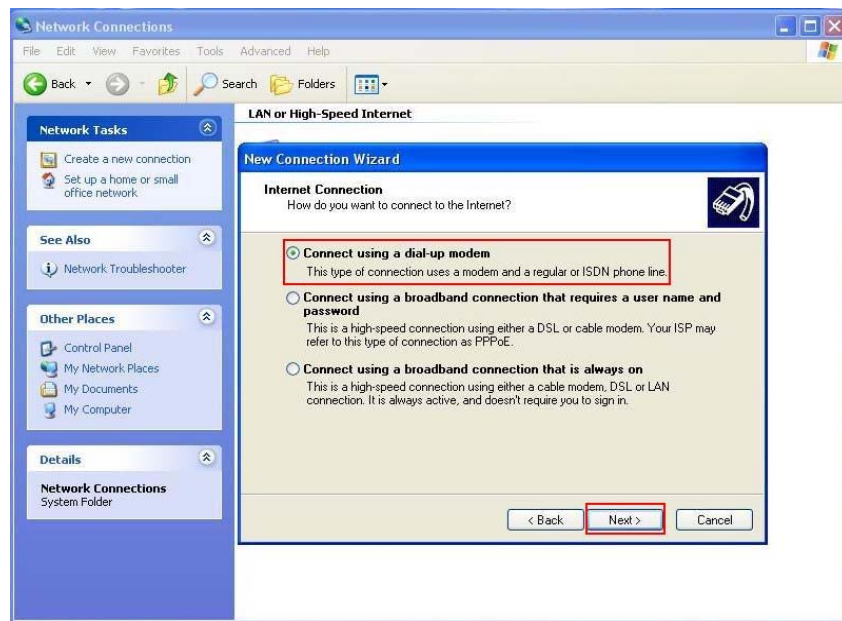
3. Select **Connect to the Internet** and click **Next**.



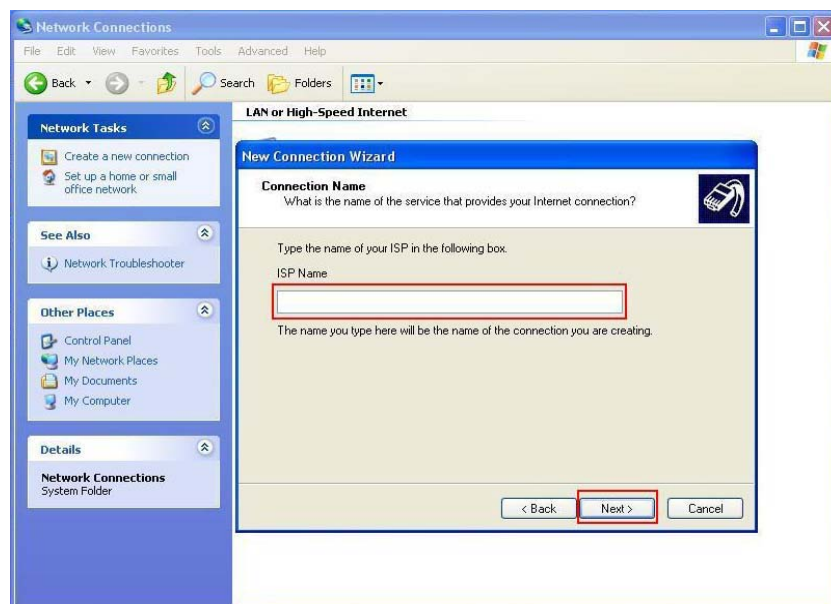
4. Select **Set up my connection manually** and click **Next**.



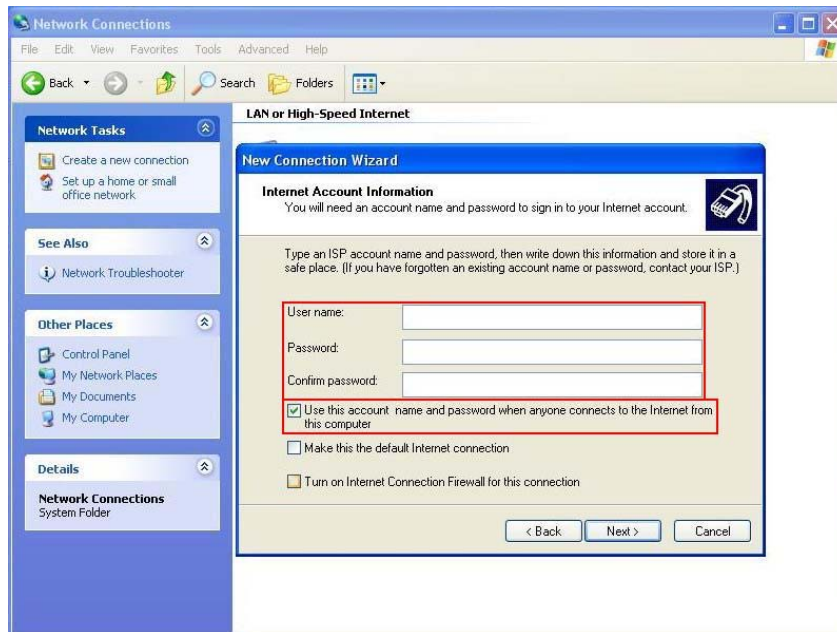
5. Select **Connect using a dial-up modem** and click **Next**.



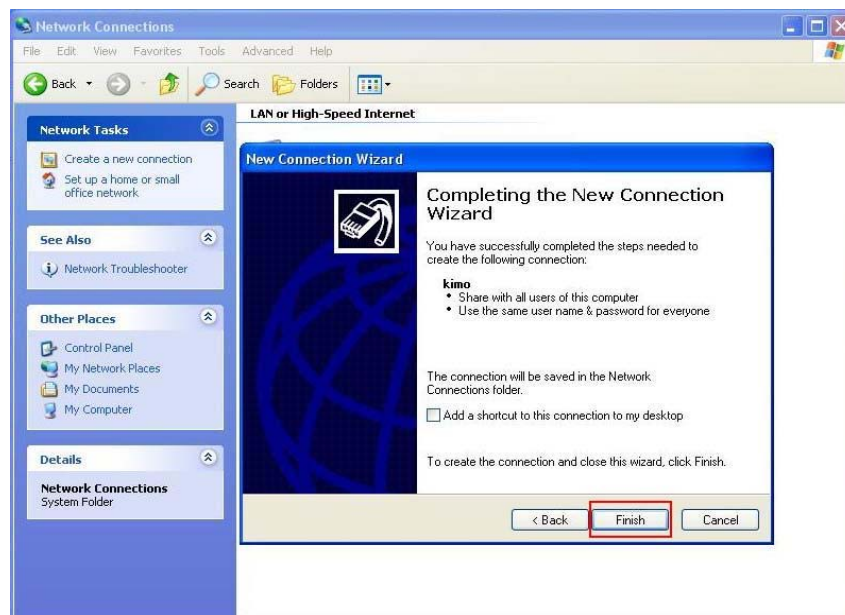
6. Input **ISP Name** and click **Next**.



7. Input **User name**, **Password** and **Confirm password**, select **Use this account name and password when anyone connects to the Internet from this computer**.



8. Click **Finish** to complete manual connection.



9. Click **Dial** to connect to Internet.

